



## Base Ring Pallets and Tongue Formers

**Base Ring Pallets and Tongue Formers allow for the perfect mating of concrete pipes and precast products.**

Using state-of-the-art CNC equipment, GCI manufactures high quality Joint Rings/ Base ring pallets and Tongue formers with diameter ranges from ID 12" – 160" (250 – 4000 mm) in round, arch, rectangular box and elliptical shapes; other shapes are provided as well. These are machined to close tolerances with exceedingly high surface finishes.

...other shapes are provided as well such as 'O'ring, single offset and tongue and groove.

### Base Ring Pallets and Tongue formers



Egg shaped



Elliptical



Round

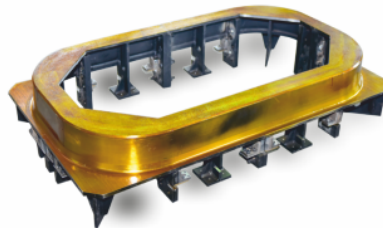


Arch

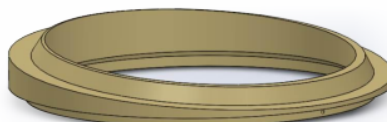
### FRP Rings



### Rectangular box shaped



### Bevel shape for curved pipelines





ISO Certification ID: No. 9108658253

Association with :



**Class 40 metal precision machined on CNC equipment. Measurements by touch probe (Marposs, Germany).**

## High machine finish and quality

### Product parameters

Base Ring Pallets and Tongue Formers ranging from 12" – 160" ( 250- 4000 mm )

### Shapes

1. Round
2. Arch
3. Elliptical
4. Rectangular boxes
5. Egg shaped
6. Cattle pass
7. Bevel pallets for curved pipelines

### Material Composition

1. Ductile Iron- all grades as per ASTM 435
2. Cast Iron- ASTM 48 Class 40
3. Aluminum
4. Steel
5. Fiber glass for spigot forming rings

### Joints

1. Tongue and groove
2. Single offset
3. Double offset
4. Confined- O- Ring
5. Confined- Double- O- Ring



**GCI GROUPS**  
NORTH AMERICA • WORLDWIDE



North America

**GCI Pipe Products Inc.**

#4125, Bonner Industrial Drive, Shawnee,  
Kansas 66226, USA  
T : +1 (913)-441-8707

Worldwide

**GCI Concrete Pipe Machinery Pvt. Ltd**

# 98 B & C, 2nd Phase Jigani Industrial Area, Anekal,  
Bangalore 560105, IN  
T : +91 91628 80300

E : [info@gcigroups.com](mailto:info@gcigroups.com)  
[www.gcigroups.com](http://www.gcigroups.com)