



## GCI Modular Box Culvert

**Rigid and robust steel panels produce dimensionally accurate box products in a wide range of sizes. For dry cast or wet cast processes.**

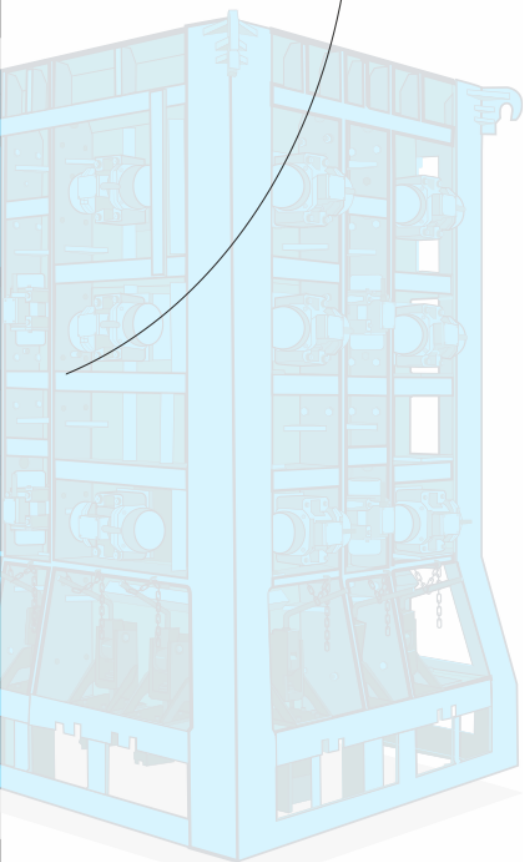
Fulfills any construction wish list—adjustable box sizes and wall thickness, easy stripping from the form...

The GCI Modular Box Culvert consists of four corner pieces of the core, jacket, pallet and header. These combine to form the smallest desired size of 4'x2'. The box size can be adjusted by attaching extension panels in between the corner pieces to independently increase the rise and span.

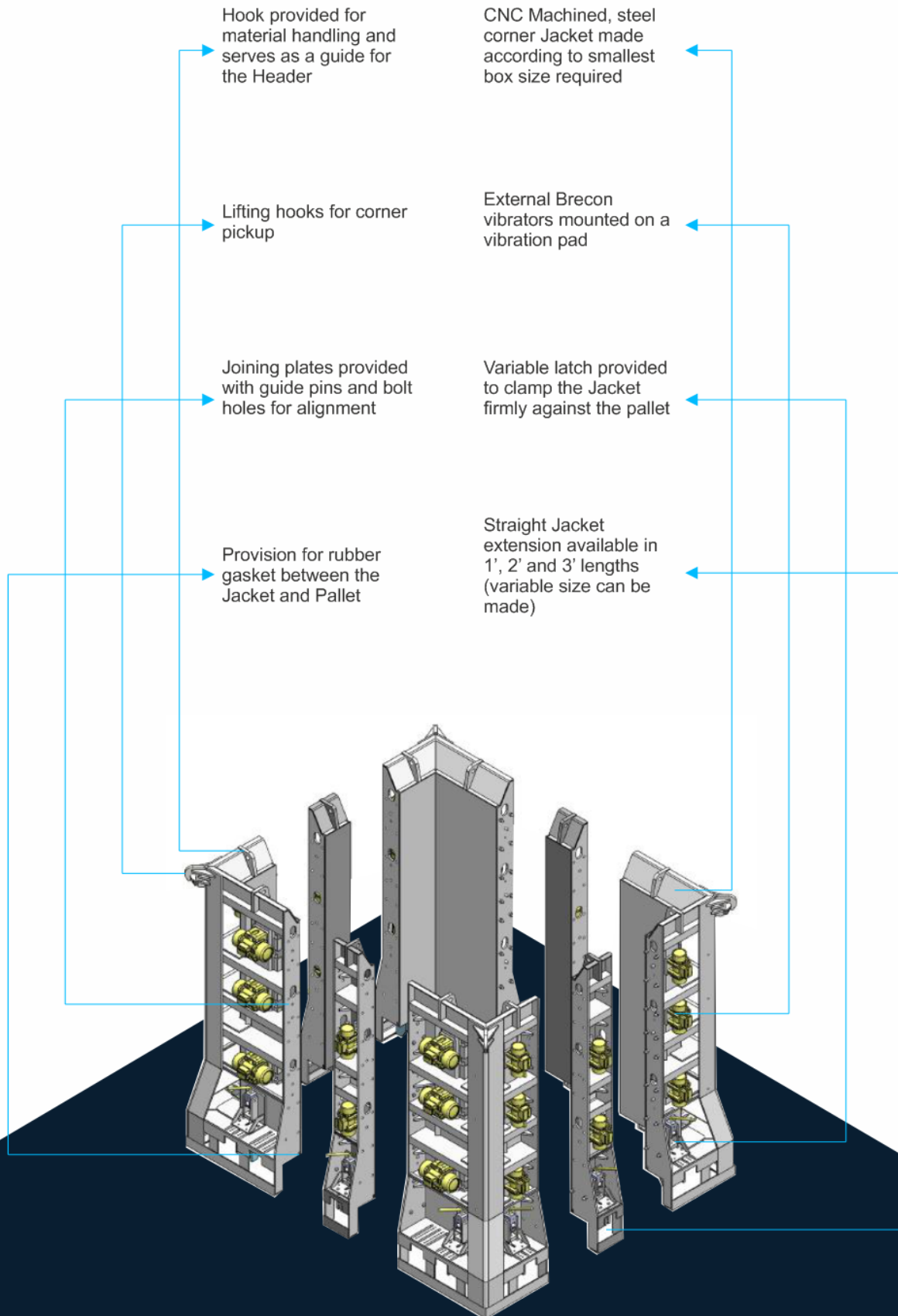
In addition, the wall thickness of the box can be altered through the pallet design.

In case of a dry cast process, external vibrators are used for uniform concrete compaction throughout the box. A vertical press head system eliminates the use of dead weights.

The wet cast box design utilizes a collapsible core mechanism to facilitate easy stripping of the product from the form, conveniently enhancing repeatability.



## A strong case as to why the GCI Modular Box Culvert works for you...



**Collapsible core with extensions; sturdy steel pallet assembly-  
add to conveniences, reducing downtimes**

Variable Header  
Haunches  
(6" , 8" , 12"

Bolt-on Header  
extensions available  
in 1'x 2' and 3'  
Lengths (variable  
series can be made)

CNC Machined Cast  
Steel Header  
Assembly, Standard  
6" or 8" Wall  
thickness (can be  
adjusted using  
spacers)

Bolt-on Header  
extensions available  
in 1'x 2' and 3'  
Lengths (variable  
series can be made)

Hydraulic Press  
Head to eliminate  
the use of dead  
weight

Variable Core  
Haunches (6' , 8' ,  
12')

Straight Core  
extension available  
in 1' , 2' and 3'  
widths (variable  
sizes can be made)

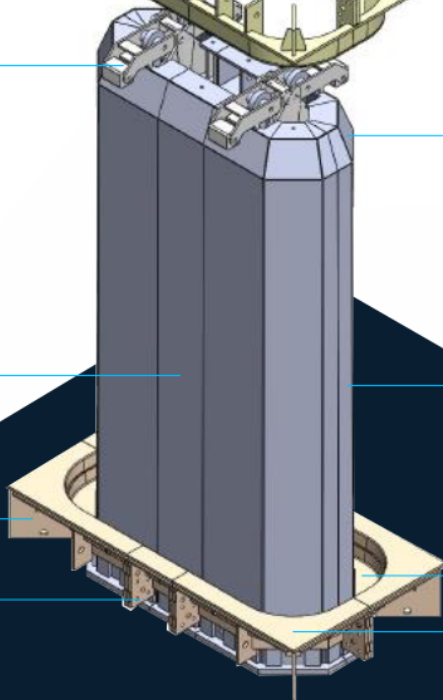
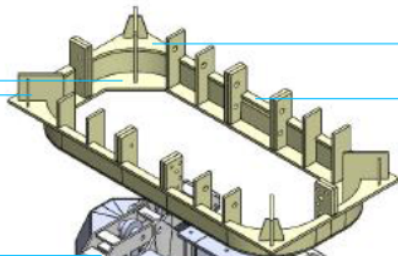
Steel Adjustable  
Corner Core  
Common size 4' x  
2' , 6' x 3' (variable  
sizes can be made  
based on  
requirement)

CNC Machined,  
Steel Pallet  
Assembly. Standard  
6" or 8" wall  
thickness  
(manufactured to  
suit minimum to  
maximum wall  
thickness)

Variable Pallet  
Haunches (6' , 8' ,  
12')

Bolt-on Pallet  
extension available  
in 1' , 2' and 3'  
lengths (variable  
size can be made)

CNC Machined,  
Steel corner Pallet  
made according to  
smallest box size  
desired



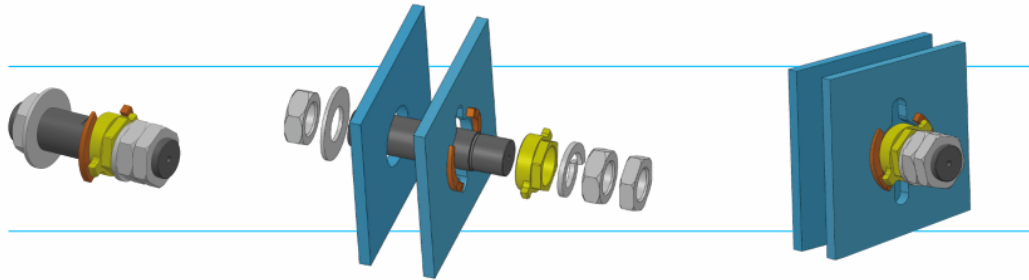


ISO Certification ID: No. 9108658253

Association with :



## Quick lock mechanism for wet cast production



## Features

- @ Rise and span dimension ranges: 4'x2' to 8'x8' and 6'x3' to 12'x 12'
- @ Wall thickness ranges from 4" to 12"; each wall can be varied independently
- @ Joint detail:
  - Tongue and Groove ( water- tight )
  - Rubber gasket ( single offset )
- @ External jacket vibrators for dry cast production
- @ Collapsible core mechanism for wet cast production

## Optional features

- @ Hydraulic press heads
- @ Pneumatic/ hydraulic latches
- @ Hydraulic strip- assistance for larger boxes
- @ Variable frequency drive for efficient operation of vibrators
- @ Egg lay system
- @ Spring design for 'noiseless' operation
- @ UL approved control panel for automation

*All mold and joint designs are in accordance with the respective ASTM Standards.*

**Disclaimer:** For visual purposes, some aspects of the product are not displayed. GCI reserves the right to change or alter this information without prior notice. We make no commitment to update the information in this data sheet. Do contact us, should you have any queries.



**GCI GROUPS**  
NORTH AMERICA • WORLDWIDE



### North America

#### GCI Pipe Products Inc.

#4125, Bonner Industrial Drive, Shawnee,  
Kansas 66226, USA  
T : +1 (913)-441-8707

### Worldwide

#### GCI Concrete Pipe Machinery Pvt. Ltd

# 98 B & C, 2nd Phase Jigani Industrial Area, Anekal,  
Bangalore 560105, IN  
T : +91 91628 80300

E : [info@gcigroups.com](mailto:info@gcigroups.com)  
[www.gcigroups.com](http://www.gcigroups.com)